



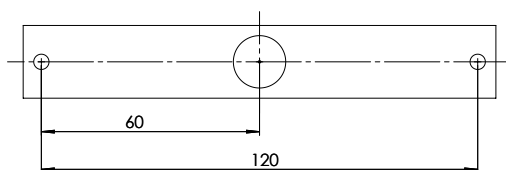
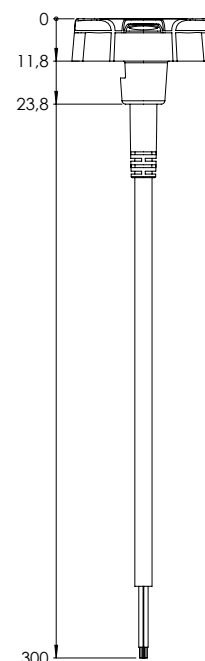
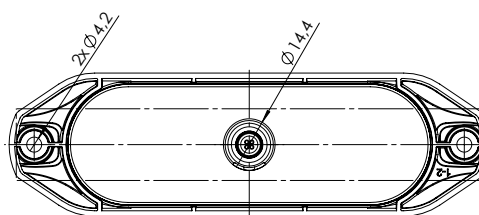
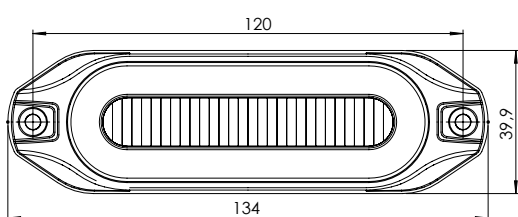
LED WARNING LIGHT

- with integrated position light

LED Warning lights with position light



- Compact and robust design
- 10 flash patterns - amber flash color
- Approved for horizontal mounting
- ECE R65 Class 2 approved



Description

Lens: Polycarbonate
 Housing: Aluminium
 Flash colour: White/amber/red
 Flash pattern: 10
 Mounting: Screw $\varnothing 4$ mm
 Working temperature: -40°C - $+60^{\circ}\text{C}$
 IP Rating: IP69K

Installation instructions can be found at
www.ermax.dk

3-YEAR WARRANTY



Voltage	Colour	Cable length	Connection	Con- sumption	Dimension L x H x D	Bolt distance	Light source	Pos	Article No..
12/24V	White	300 mm	Open end	9W	134 x 40 x 12 mm	120 mm	6 x LED	1	098 286 230
12/24V	Amber	300 mm	Open end	9W	134 x 40 x 12 mm	120 mm	3 x LED	2	098 286 220
12/24V	Red	300 mm	Open end	9W	134 x 40 x 12 mm	120 mm	6 x LED	3	098 286 200